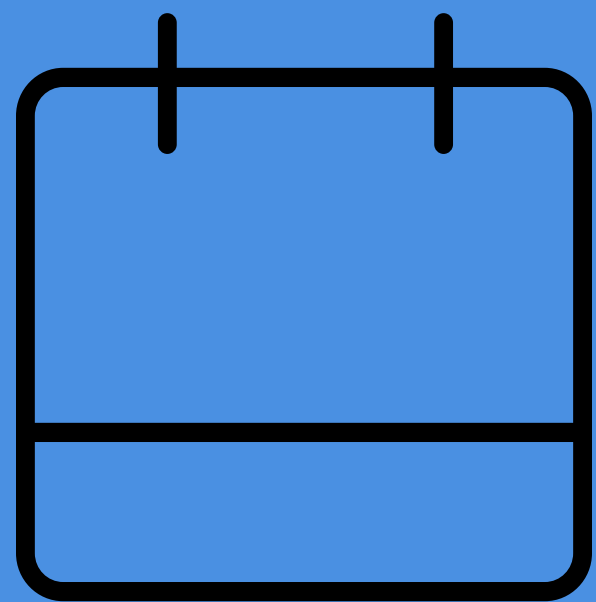


# Assessment for Learning

We gather evidence of understanding on a daily basis while the students are in the process of learning. To do this we must know our students : where they are, what they understand, and how they learn. This information guides our decisions about what we will do next in order to fill in gaps, clarify misconceptions and provide the kind of feedback that will help students move forward.



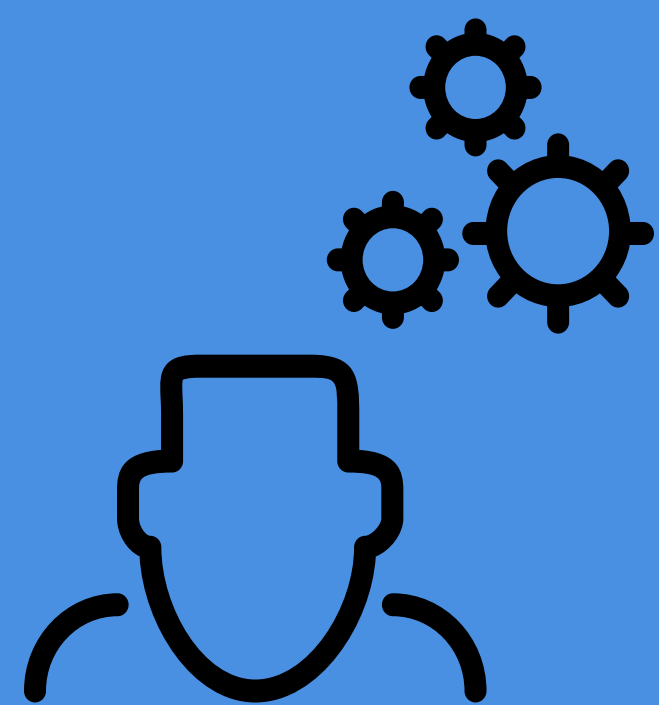
Part of everyday teaching practices.



Used to inform and adapt teaching practices.

**Assessment  
for  
Learning  
is...**

A quick way to gather information about student learning.



Done in conjunction with students to engage them in their own learning.

